

Main Applications

- * Suitable for Belt Weigher.
- * D52: For corrosive gas environment.
- * D52EX: For Explosion gas environment: Zone 1&2;
Classes of explosion gas mixture: IIA, IIB; Temperature grades of explosion gas mixture: T1~T6; Ex-mark: ExdIII BT6 Gb.

Main Features

- * EMC design with high anti-jamming capability, suitable for industrial environment.
- * 24-bit Σ - Δ ADC with internal resolution 1/1,000,000 and sampling frequency 200Hz.
- * Special anti-vibration digital filtering algorithm for ensuring the weighing stability and accuracy when there is strong vibration on the load receptor, and the rapid response capability when the weight signal changes.
- * Optional 'External Speed' or 'Inner Speed' working mode.
- * Auto Zero Tracking, Speed Calibration, Belt Length Calibration and Segmenting Span Correction functions available.

Technical Specifications

- * Power Supply: AC220V \pm 15%, Max. 10W.
- * 32-bit ARM CPU with 72MHz clock & higher arithmetic speed.
- * 160 \times 32 dots LCD display screen with yellow-green background for English /Chinese display.
- * Loadcell Excitation Voltage / Max. Current: DC10V/250mA [8 350 Ω - loadcells].
- * Weighing Signal Input Range: 0~25mV.
- * Speed Sensor Excitation Voltage / Max. Current: DC12V/100mA.
- * Speed Signal Input Range: 0.5~3000Hz.
- * 1 Optional Flow Analog Signal Output [AO: 4~20mA, 0.05%FS, COM1 will be occupied].
- * COM1: Optional RS232/RS485/RS422/Profibus-DP/Ethernet; COM2: RS232; For connecting Host IPC/PLC[Modbus], LED Remote Display, Serial Printer and Wireless Module.
- * Outline Size [W \times H \times D]
- * D12: 170 \times 91 \times 184 mm.
- * D52: 235.5 \times 227.5 \times 119.5 mm.
- * D52EX: 340 \times 390 \times 205 mm.
- * Panel Cut-out Size [W \times H]
- * D12: 151 \times 76 mm.
- * Operating Temperature: -20 $^{\circ}$ C~+40 $^{\circ}$ C.
- * Protection Level
- * D12[Front Panel]: IP65.
- * D52/D52EX: IP65.
- * Accuracy Grade: 0.5.



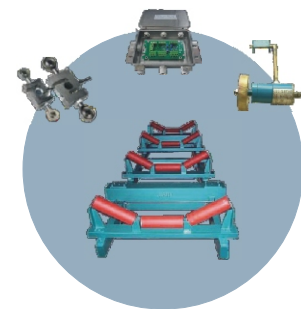
BST100-D12



BST100-D52



DCX-61-BST100-D52EX

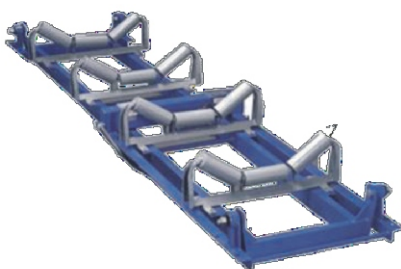


4-roller&Suspension Belt Weigher

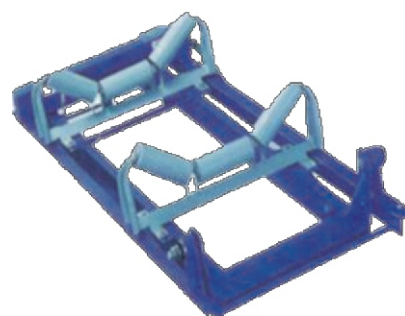
Typical Applications

Years of Field Application

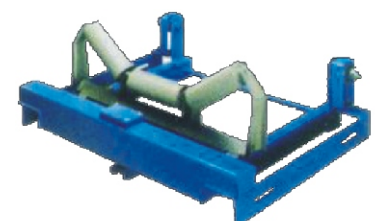
Stable & Reliable Performance



4/2-roller&2-lever Belt Weigher



2-roller&1-lever Belt Weigher



1-roller&1-lever Belt Weigher