

Main Applications

- * Suitable for Ration Belt Weighfeeder with Ration Flow Feeding & Ration Weight Batch Control.

Main Features

- * EMC design with high anti-jamming capability, suitable for industrial environment.
- * 24-bit Σ - Δ ADC with internal resolution 1/1,000,000 and sampling frequency 200Hz.
- * Special anti-vibration digital filtering algorithm for ensuring the weighing stability and accuracy when there is strong vibration on the load receptor, and the rapid response capability when the weight signal changes.
- * The feeder and belt weigher can be started and stopped by DI&DO signal.
- * Quick and steady PID for ration feeding control available.

Technical Specifications

- * Power Supply 1: AC220V \pm 15%, Max. 15W.
- * Power Supply 2: DC24V \pm 20%, Max. 10W.
- * 32-bit ARM CPU with 72MHz clock & higher arithmetic speed.
- * 128 \times 64 LCD display screen with 7 background colors for English/Chinese display.
- * Loadcell Excitation Voltage / Max. Current: DC10V/250mA [8 350 Ω - loadcells].
- * Weighing Signal Input Range: 0~25mV.
- * Speed Sensor Excitation Voltage / Max. Current: DC12V/100mA.
- * Speed Signal Input Range: 0.5~3000Hz.
- * 1 Optional 'Flow Setpoint' analog signal input [AI: 4~20mA, 0.05%FS].
- * Max.3 definable 'Flow/Control Current /...' analog signal outputs [AO: 4~20mA, 0.05%FS].
- * 3 Definable normally open switch inputs [DI] and 4 definable normally open relay switch outputs [DO: AC250V/DC24V, 1A].
- * 1 'Totalized Weight High-speed Pulse' output [PO: DC5~24V, 100mA].
- * COM1: Optional RS232/RS485/RS422/Profibus-DP/Ethernet; COM2: RS232; For connecting Host IPC/PLC[Modbus], LED Remote Display, Serial Printer and Wireless Module.
- * Outline Size [W \times H \times D]
 - * E01: 86 \times 164 \times 193 mm.
 - * E11: 164 \times 86 \times 193 mm.
 - * E21: 202 \times 305 \times 90 mm.
 - * E81: 288 \times 95 \times 189 mm.
- * Panel Cut-out Size [W \times H]
 - * E01: 77 \times 153 mm.
 - * E11: 153 \times 77 mm.
 - * E81: 281 \times 88 mm.
- * Operating Temperature: -20 $^{\circ}$ C~+40 $^{\circ}$ C.
- * Protection Level
 - * E01/E11/E81[Front Panel]: IP65.
 - * E21: IP65.
- * Accuracy Grade: 0.5.
- * Accuracy of Flow Control: 0.5%~1.0%.



BST100-E11



BST100-E01



BST100-E21

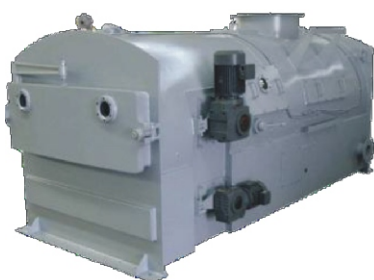


BST100-E81[DC24V]

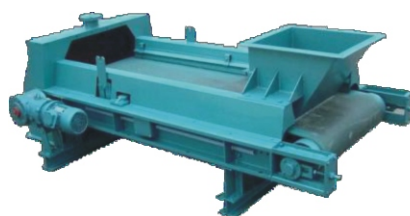
Typical Applications

More Advanced Technology

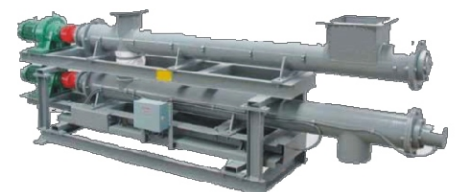
More Excellent Quality



Coal Weigh feeder



Belt Weigh feeder



Screw Weigh feeder